

Vocera Badge Features

Common Badge Features

Learn about the universal features on all Vocera badges.

This section describes features that are common to all types of Vocera badges.

Call Button

Learn the basic functions and features of the Call button.

Press the Call button to begin and end all voice communications, such as making calls, sending and listening to messages, and recording your name and greeting. The Call button also has these other uses:

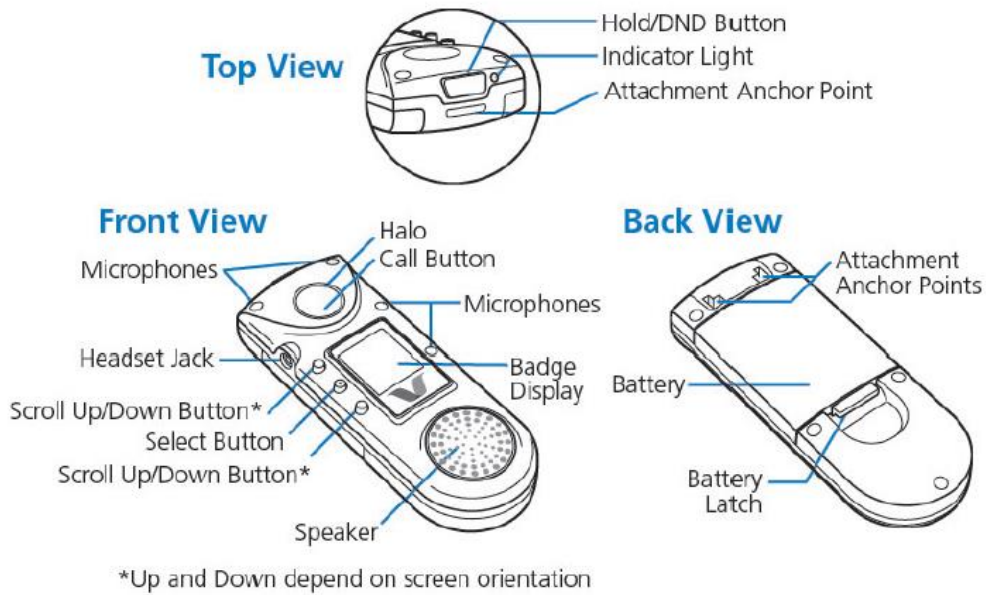
- If the badge power is off, you can press the Call button to turn it on.
 - If the Genie asks you a question that requires a yes or no response, you can press the Call button to answer "yes."
 - If you are on a call and you hear a Call Waiting tone, press the Call button to put the current call on hold and connect to the new call. To disconnect from the second call and return to the call on hold, press the Call button again.
-

Hold/DND Button

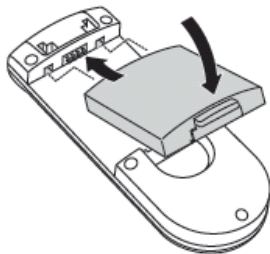
Learn about the button used to enable Hold and Do Not Disturb (DND) mode.

The Hold/DND button places calls on hold, puts the badge in Do Not Disturb mode, and turns the badge power off:

- To hold a call, press the Hold/DND button while the call is in progress. To release the hold, press the button again.
While a call is on hold, you can press the Call button to summon the Genie. When the Genie answers, you can call another user, check for new messages, or issue any other command. Once the command has been carried out and the operation is finished, the Genie automatically reconnects you with the person on hold.
- To put the badge in Do Not Disturb mode, press the Hold/DND button when no call is in progress. Callers are told that you are unavailable, and they are invited to leave a message, or else their call is forwarded to another destination if forwarding is active for your badge.
- The Hold/DND button can turn the badge off. Press and hold the Hold/DND button for at least seven seconds to turn off the badge power.

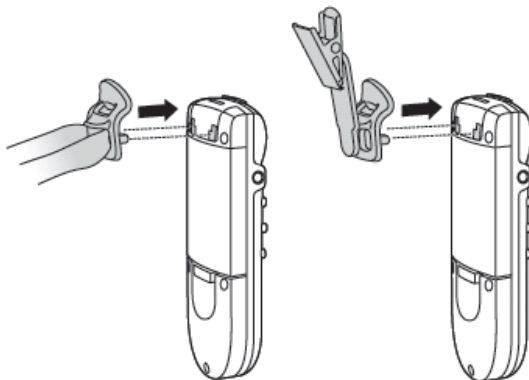


Install the battery. To do this, slide the pegs at the top of the battery into the two holes in the badge's battery compartment, and then press down gently on the latch to seat the battery.



The badge will begin a startup sequence. Wait until the badge display reads Logged Out or shows someone's name.

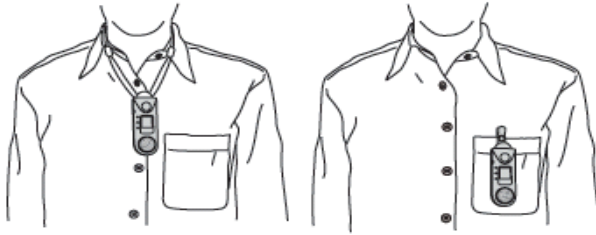
Choose the lanyard or universal clip attachment, and connect it to the badge.



You also can connect the lanyard or clip to the badge *before* installing the battery.

Put the badge on, and make sure it is in the proper position.

For optimal speech recognition, the top of the badge should be approximately 6 inches (15 centimeters) from your chin. Any sound coming from another direction or beyond that distance is reduced or eliminated by the noise canceling microphones.



Log in: Press the Call button and wait for the Genie to answer.

- **If the Genie asks for your name**, say your first and last names.
- **If the Genie answers by saying "Vocera" or by playing a tone**, another user may already be logged in. If so, say "Log me out," wait for the chime, and then press the Call button again to log in.